



# CUTTING EDGE

---

## INTEGRATIVE PAIN CENTERS





## Concierge Physician Packet

We know that you care for your patients in a unique way. You provide an intense, meticulous patient provider connection which doesn't fit within the confines of traditional medicine. You take the needed time to care for your patients that isn't limited to a 15 minute visit mandated by insurance .

### Why shouldn't specialists that partner with the care of your patients do the same?

*We know that medicine is a difficult, time-consuming practice requires attention to detail. Let us partner with you to care for your patients with pain.*

We use technology to leverage an optimized patient experience that provides insight into your patient's health, concerns and outcomes from our patient treatment. We understand treating patients in an environment not confounded by the trappings of insurance and can provide both you and your patient clear, transparent costs of therapeutic interventions using direct cash payment.

We not only provide some of the most advanced pain therapies from FOUR categories of treatment all of which are not reliant upon steroids or opioids as mainstays of treatment; but we also provide one of the most advanced, integrated, cutting-edge monitoring systems that evaluates patients during their time of treatment by our practice:

1. Our online program tracks mental health such as depression, anxiety and sleep and recommends specific meditation videos and online connections to therapists.
2. Our online physical therapy program aims to improve health by providing a tailored program that gives immediate access to a pain relieving physical therapy. Our program tracks your progress and gives updates to both the patient and our practice so that we can proactively intervene.
3. Intelligent clinical connections with automated condition specific questionnaires that track patients symptoms, vitals and lifestyle factor which are important for their outcome and Provides HIPAA compliant two texting and video consults.





Our four categories of treatment include:



### **Regenerative Medicine**

Regrow, repair, and replace damaged tissue using your body's natural healing power.



### **Neuromodulation Therapy**

Retrain your brain and nervous system to relieve pain and improve your quality of life.



### **Integrative Wellness**

We offer a balanced approach to helping you live a happier, healthier, pain-free life.

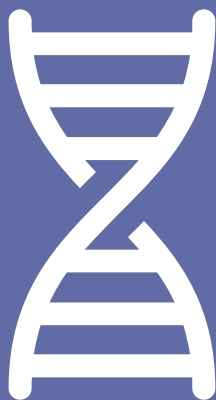


### **Minimally- Invasive Procedures**

Get back to where you need to be — faster and without pain.

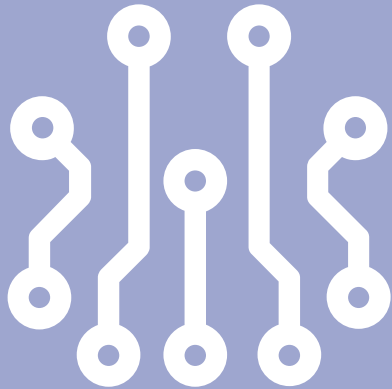
We believe the most important aspect of treating any patient is understanding their “why.” What is this patient’s individual values? What is the most important thing in improving their physical functioning or relieving their pain? What do they want to be able to do most but can’t do currently?

## **Why do we approach patient treatment this way? Because for us, it’s personal.**



### **REGENERATIVE MEDICINE**

We provide researched outcome based regenerative medicine treatments using concurrent ultrasound and fluoroscopic imaging to deliver treatments for musculoskeletal treatments from head to toe, including complicated spinal procedures. We are one of the few centers in the Midwest to provide onsite anesthesia both for cell harvest and treatment. In addition, we are one of the few regenerative medicine treatment facilities that has registry data that tracks our patient’s outcome data. This means physicians and patients can assess our track record and how it applies to the therapy we deliver. The data also reveals quantitatively how good of a candidate they are in particular and the resulting potential impact of any treatment transaction.



### **NEUROMODULATION THERAPY**

We offer full spectrum treatment from invasive to Non-invasive options. Patient exhibiting nerve pain of any sort can be treated onsite in our non-invasive treatment rooms or via our procedure suite.

Our Invasive stimulation expertise is extensive and broad. We do both percutaneous trials and implantation for multiple systems including:

Traditional (paresthesia/nonparesthesia) high frequency, dorsal root ganglion, peripheral PNS, and medial branch peripheral nerve stimulation.

Non-invasive neuromodulation—we are one of the few MD led practices that utilize QEEG based evaluation and treatment of pain via neurotherapy techniques such as neurofeedback and transcutaneous electrical.



### **INTEGRATIVE WELLNESS**

- Initial Cutting Edge lab test pain panel.
- Supplemental therapy which is adjusted to your patients personalized health every 3 months.
- Start of low dose naltrexone tailored to your patients pain condition.

We provide your patients with an online program that tracks mental health such as depression, anxiety and sleep and recommends specific meditation videos and online connections to therapists.

We also provide your patients with an online individually tailored physical therapy program that gives immediate access to pain relieving physical therapy programs. Our program tracks your progress and gives updates to both the patient and our practice so that we can proactively intervene and tailor care in a responsive fashion.



### MINIMALLY INVASIVE PAIN PROCEDURES

We know patients want to avoid invasive surgery that can be both limiting in quality of life post procedure, but also at times, not always effective with sustainable outcomes. We provide a host of treatment options that are not limited by the trappings of a typical insurance based model. Cutting Edge offers a transparent pricing of consultation, onsite radiographic imaging, procedure and anesthesia, and remote post procedure follow up costs.

We have provisions for providing full evaluation of patients using a mixture of telemedicine and remote lab services to ensure a focused and detailed pre-procedure evaluation without cutting into a patient's busy schedule.



### WE OFFER THE FOLLOWING OPTIONS :

- Transforaminal endoscopic discectomy
- Minimally invasive lumbar decompression
- Superior indirect decompression system
- Percutaneous sacroiliac joint fusion
- Cooled radio frequency ablation (knee, hip, shoulder)
- Kyphoplasty and vertebroplasty
- Intracept-vertebrobasilar nerve ablation
- Endoscopic rhizotomy
- Z fuse-percutaneous facet fusion
- Lumbar disc biacuplasty
- Intradiscal stem cell treatment
- Laser facet joint treatment





**CUTTING EDGE**  
INTEGRATIVE PAIN CENTERS

We know you care for patients in a more involved and detailed oriented fashion than traditional medicine. Don't you and your patients deserve a specialist partner who provides a similar vision in caring for patients? Let us be that partner in caring for your patient who has musculoskeletal and pain problems so that they can get back to leading the life they deserve without invasive and frequently ineffective treatments. Cutting Edge will treat your patients with the most state of the art medical treatments while using a patient centered approach that is focused on outcomes, connection and transparency.

Thank you for your consideration,  
Orlando Landrum MD/MBA

If you need immediate help with a patient or a simple curbside, I am available via call or text at 781.985.1001